

MODEL LT105-FV1 -CS

The Filmox LT105-FV1 filtration system is proven to reduce operating and maintenance costs and help prevent premature failures.



SPECIFICATIONS

- Custom NEMA 3R enclosure 41.13"H X 34"W X 17"D Powder Baked (ANSI 70 Gray or ANSI 61 Gray) with removable top and front access panels with Spill Containment Reservoir
- 3/4 HP TEFC Motor with Thermal Overload Protection.
- 5 GPM Mechanical Sealed Positive Displacement Pump with Internal Relief Valve.
- One (1) Epoxy Powder Baked F-1000 Element Housing.
- Automatic High Pressure (plugged filter) Shutdown System and Low Pressure (loss of flow) Shutdown System with Alarm and Remote Contacts.
- Automatic Restart System for Voltage Drop or Power Interruption.
- Filmox's Spill Containment with Oil Spill Shutdown System (Patent No. 5,691,706).
- Internally plumbed with all Brass and High Pressure Hose with crimped fittings.
- Suction Wye-Strainer to protect pump from large debris.
- Wired 120 Volt, single phase with all electrical components assembled in a separate NEMA 4 enclosure. (Also available in 240V)
- 3-Way Inlet Valve to allow simple adding of make-up oil and draining of filter housing for easy filter change.
- 24 Hour Programmable Timer.
- Hour Meter

All interior design, engineered to operate 24/7/365 for continuous maximum filtration

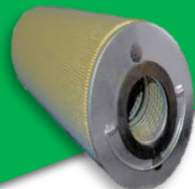
HY4004
Carbon removal filter









DF4110
Superior carbon removal filter



FHD718
Ultimate dissolved water removal filter



Additional Accessories and Upgrades

<p>Moisture Sensor</p> 	<p>Detects moisture ppm in insulating oil</p>	<p>Fan heater with thermostat</p> 	<p>Designed to prevent condensation and maintain minimum temperatures in enclosures, built in thermostat and fan auto/on switch with heat on indicator</p>
<p>Guardian Breathers & replacement cartridges</p>  <p>Tritan material construction</p>	<p>Maximum contamination control desiccant breather with isolation check valve technology which isolates the absorbent from exhaust air to lengthen service life and protect from fluid splatter</p>	<p>240VAC upgrade</p> 	<p>Provides maximum power savings (110VAC/120 VAC Standard)</p>
<p>White Rogers temperature control</p> 	<p>Utilized in cold weather applications, this thermostat provides temperature control from -30° to 90° F, ensuring automatic system shut-down in the event of unfavorable temperatures.</p>	<p>3/4" stainless steel braided hoses</p> 	<p>Constructed of anti-corrosive 12 gauge steel with crimped swivel ends</p> <p>**Length must be specified by customer**</p>

Other customizable upgrades available-contact the Filmax sales team for your specific needs

LT105-FV1 (FL) Diagram

