

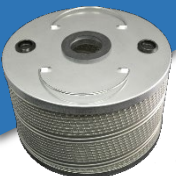
MODEL TS-7100

The Filmmax TS-7100 filtration system is proven to reduce operating and maintenance costs and help prevent premature failures.



- Automatic restart system for voltage drop or power interruptions
- Failsafe circuit designed to isolate the system in the event of a power outage
- Main power 20 amp circuit breaker for power disconnects
- Control circuit requiring only power and alarm connections
- All brass fittings and high pressure hoses with crimped swivel ends
- 3/4 HP TEFC motor with thermal overload protection
- 5 GPM mechanically sealed positive displacement pump with internal relief valve
- Automatic high and low pressure shutdown system with alarm and remote contacts
- Failsafe system which isolates machine from transformer in event of low oil pressure, high oil pressure, or internal oil spill
- FHF-3000 housing epoxy powder-coated (inside and out)
- Reverse flow manifold to fill inlet and outlet lines with oil to purge the system of all air
- Wired 120 VAC, 8 AMP (10.5 AMP at startup and 8 continuous) 1 Phase system with all electrical components in a separate NEMA 4 enclosure, upgradable to 240 VAC as needed
- Spill containment enclosure with 2 isolating shutdown systems in the event of oil spill
- SCADA connection capabilities
- 3-way inlet ball valve to add make-up oil and drain filter housing which simplifies filter changes
- Actuating ball valve rated from -40 to +150 degrees F
- DC circuit with supercapacitor to close actuating ball valves in the event of substation power loss
- Digital flow meter with manual reset
- Inline double window sight glass with float ball for fluid monitoring
- Sample port for easy oil sampling
- Custom NEMA 3R enclosure 36"WX30"DX42"H powder-baked ANSI 61 Gray

FHD1107
 Molecular sieve filter designed to remove dissolved water



FFE1107
 Fullers Earth filter designed to remove gas



FBA1107
 Activated alumina filter designed to remove acid



KSA300
 Cellulose media filter designed to remove particulate





The Vaisala monitoring system provides real time data for moisture in oil, giving indications of relative saturation or absolute ppm levels. Various models available



The M4500 liquid level float switch has a brass stem and a Buna-N float, ideal for early detection of oil in the containment reservoir.



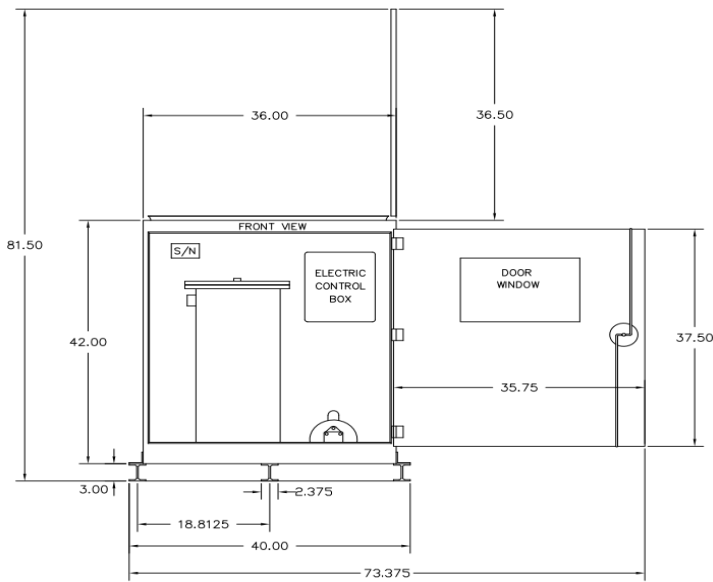
The electrically actuated valves are an excellent option for automated applications. The two-piece design offers flexibility and ease of use.



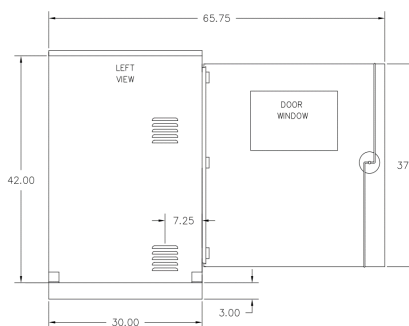
The maintenance-free 24 V DC dual layer capacitor, 20 kJ, provides automatic detection and communication with QUINT UPS-IQ.



Front View



Side View



Bottom View

