

MODEL LT105-C1

The Filmox LT105-C1 filtration system is proven to reduce operating and maintenance costs and help prevent premature failures.

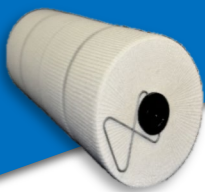


- Automatic restart system in the event of voltage drop or power interruptions
- 20 Amp circuit breaker
- Control circuit complete requiring only power and alarm connections
- Internally plumbed with all brass fittings and high pressure hoses with crimped swivel ends
- 3/4 HP TEFC motor with thermal overload protection
- 5 GPM external geared positive displacement pump with internal relief valve
- 10 full load amp draw at startup, 8 continuous
- Automatic high and low pressure shutdown system with alarm and remote contacts
- Wired 110 volt, 1 phase with all electrical components in a separate NEMA 4 enclosure, upgradeable to 240 VAC as needed
- Filmox's spill containment enclosure with oil spill shutdown system
- One (1) epoxy powder coated black inside and out F-1000 element housing
- 3-Way inlet valve to allow simple adding of make-up oil and draining of filter housing for easy filter changes
- In-line double window sight glass with float ball for fluid monitoring
- Sample port for easy oil sampling
- Completely self-contained unit
- Custom NEMA 3R enclosure 30"W x 21"D x 36"H powder baked ANSI 61 gray
- Door-mount external 0-100 psi glycerin-filled pressure gauge
- Door-mount external warning lamps to indicate high and low pressure shutdowns
- Door-mount external elapsed-hour counter to monitor run time
- Multifunctional timer programmable from 1 to 24 hrs. to accommodate individual LTC needs

All interior design, engineered to operate 24/7/365 for continuous maximum filtration

HY4004

Carbon removal filter



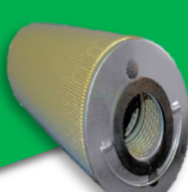
DF4110

Superior carbon removal filter







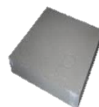



FHD718

Ultimate dissolved water removal filter



Additional Accessories and Upgrades

<p>Moisture Sensor</p> 	<p>Detects moisture ppm in insulating oil</p>	<p>Fan heater with thermostat</p> 	<p>Designed to prevent condensation and maintain minimum temperatures in enclosures, built in thermostat and fan auto/on switch with heat on indicator</p>
<p>Guardian Breathers & replacement cartridges</p>  <p>Tritan material construction</p>	<p>Maximum contamination control desiccant breather with isolation check valve technology which isolates the absorbent from exhaust air to lengthen service life and protect from fluid splatter</p>	<p>240VAC upgrade</p> 	<p>Provides maximum power savings (110VAC/120 VAC Standard)</p>
<p>24" Lift Stand</p> 	<p>Perfect for flood areas and to raise unit for easier access</p> <p>**Available in stainless steel or 12 gauge anti-corrosive steel</p>	<p>3/4" stainless steel braided hoses</p> 	<p>Constructed of anti-corrosive 12 gauge steel with crimped swivel ends</p> <p>**Length must be specified by customer**</p>
<p>Concrete mounting pad</p> 	<p>Provides a level surface of operation which insures optimum oil flow; crucial during severe weather conditions</p>	<p>White Rogers temperature control</p> 	<p>Utilized in cold weather applications, this thermostat provides temperature control from -30° to 90° F, ensuring automatic system shut-down in the event of unfavorable temperatures.</p>

Other customizable upgrades available-contact the Filmox sales team for your specific needs

****MACHINE WEIGHT IS 285 LBS *PLUS* PALLET WEIGHT****

